



Auxiliary  
contactor  
BGF00

Product designation

Product type designation

**Contact characteristics**

Number of poles	Nr.	4
Rated insulation voltage $U_i$ IEC/EN	V	690
Rated impulse withstand voltage $U_{imp}$	kV	6
Operational frequency		

min	Hz	25
max	Hz	400

IEC Conventional free air thermal current $I_{th}$	A	10
Short-time allowable current for 10s (IEC/EN60947-1)	A	0

Protection fuse	gG (IEC)	A	16
-----------------	----------	---	----

Tightening torque for terminals	min	Nm	0.8
	max	Nm	1
	min	Ibin	9
	max	Ibin	9

Tightening torque for coil terminal	min	Nm	0.8
	max	Nm	1
	min	Ibin	9
	max	Ibin	9

Max number of wires simultaneously connectable	Nr.	2
--	-----	---

Conductor section	AWG/Kcmil		
		max	12

Flexible w/o lug conductor section	min	mm <sup>2</sup>	0.75
	max	mm <sup>2</sup>	2.5

Flexible c/w lug conductor section	min	mm <sup>2</sup>	1.5
	max	mm <sup>2</sup>	2.5

Flexible with insulated spade lug conductor section	min	mm <sup>2</sup>	1.5
	max	mm <sup>2</sup>	2.5

Power terminal protection according to IEC/EN 60529		IP20 when wired
---	--	-----------------

**Mechanical features**

Operating position	normal allowable	Vertical plan ±30°
--------------------	------------------	-----------------------

Fixing		Screw / DIN rail 35mm
--------	--	--------------------------

Weight	g	212
--------	---	-----

Conductor section	AWG/kcmil conductor section			max	12
<b>Auxiliary contact characteristics</b>					
Thermal current I <sub>th</sub>				A	10
IEC/EN 60947-5-1 designation				A600 - Q600	
Operating current AC15				230V	A 3
				400V	A 1.9
				500V	A 1.4
Operating current DC12				110V	A 2.9
Operating current DC13				24V	A 2.9
				48V	A 1.4
				60V	A 1.1
				125V	A 0.3
				220V	A 0.1
				600V	A 0.6
<b>Operations</b>					
Mechanical life				cycles	20000000
<b>Safety related data</b>					
Performance level B10d according to EN/ISO 13489-1				mechanical load	cycles 20000000
Mirror contacts according to IEC/EN 60947-4-1				YES	
EMC compatibility				yes	
<b>DC coil operating</b>					
DC rated control voltage				V	24
DC operating voltage					
	pick-up			min	%Us 75
				max	%Us 115
	drop-out			min	%Us 10
				max	%Us 25
Average coil consumption =20°C				in-rush	W 3.2
				holding	W 3.2
<b>Max cycles frequency</b>					
Mechanical operation				cycles/h	3600
<b>Operating times</b>					
Average time for U <sub>s</sub> control	in AC				
	Closing NO			min	ms 12
				max	ms 21
	Opening NO			min	ms 9
				max	ms 18
	Closing NC			min	ms 17
				max	ms 26
	Opening NC				

		min	ms	7
		max	ms	17
in DC				
	Closing NO	min	ms	18
		max	ms	25
	Opening NO	min	ms	2
		max	ms	3
	Closing NC	min	ms	3
		max	ms	5
	Opening NC	min	ms	11
		max	ms	17

**UL technical data**

Contact rating of auxiliary contacts according to UL A600 - Q600

**Ambient conditions**

Temperature

Operating temperature

min	°C	-50
max	°C	+70

Storage temperature

min	°C	-60
max	°C	+80

Max altitude

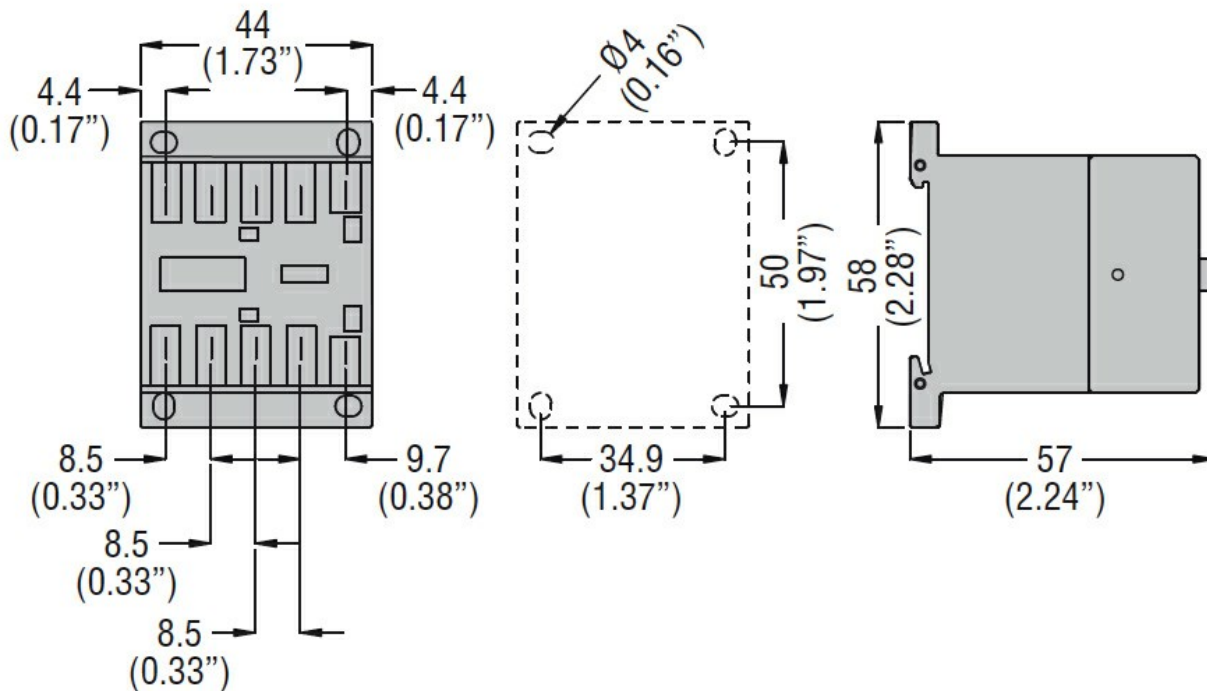
m 3000

**Resistance & Protection**

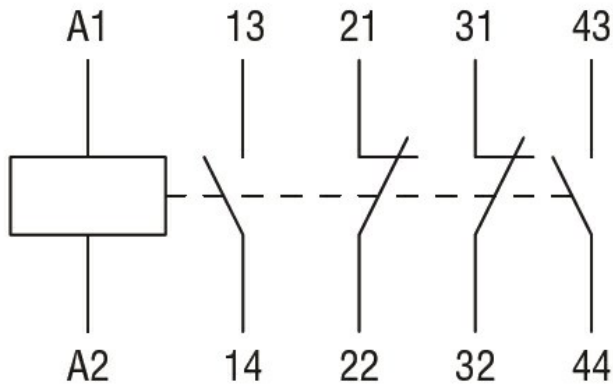
Pollution degree

3

**Dimensions**



**Wiring diagrams**



**Certifications and compliance**

Compliance

CSA C22.2 n° 60947-1

CSA C22.2 n° 60947-5-1

IEC/EN 60947-1

IEC/EN 60947-5-1

UL 60947-1

UL 60947-5-1

Certificates

CCC

cULus

EAC

**ETIM classification**

ETIM 8.0

EC000196 -  
Contactor relay